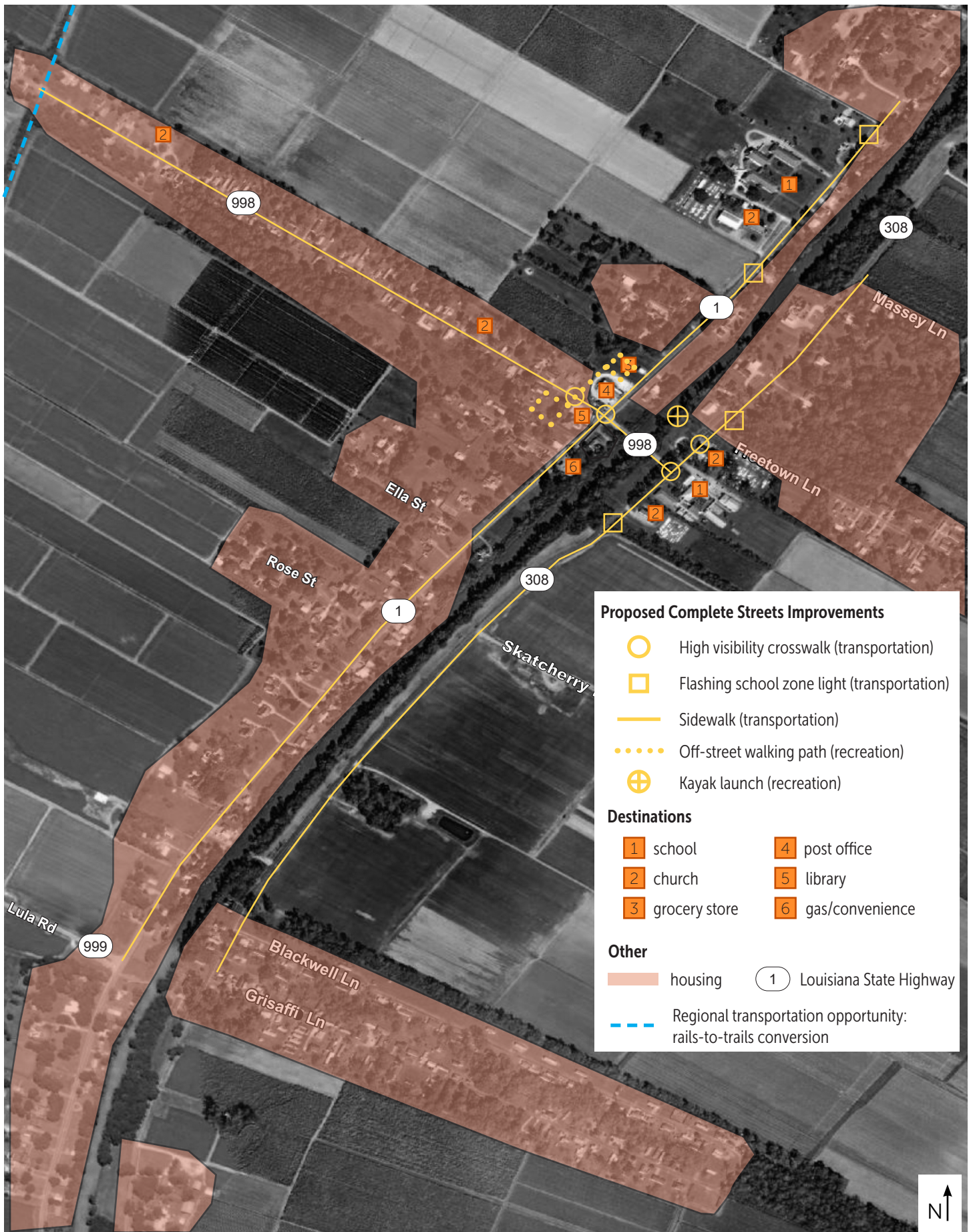


Proposed Complete Streets Improvements Belle Rose community - Assumption Parish, LA

September 2022



Description of Proposed Facility Types and Provision of Transportation for Non-Drivers

The proposed sidewalks and crosswalks provide a means for non-drivers to access community destinations, including schools, churches, store, post office, library, and gas station/convenience store. The proposed flashing school zone lights warn drivers that they are approaching a school zone, providing greater awareness of non-drivers using the area.

List of State and Local Routes with Proposed Infrastructure Improvements

- LA Hwy 998: sidewalks, crosswalks
- LA Hwy 1: sidewalks, crosswalks, flashing school zone lights
- LA Hwy 308: sidewalks, crosswalks, flashing school zone lights
- No proposed improvements on LA Hwy 999 or local routes

Community Input

Community members and elected officials provided input through two walk audits, and had opportunities to provide feedback on the proposed map at school field days and community coalition meetings.